

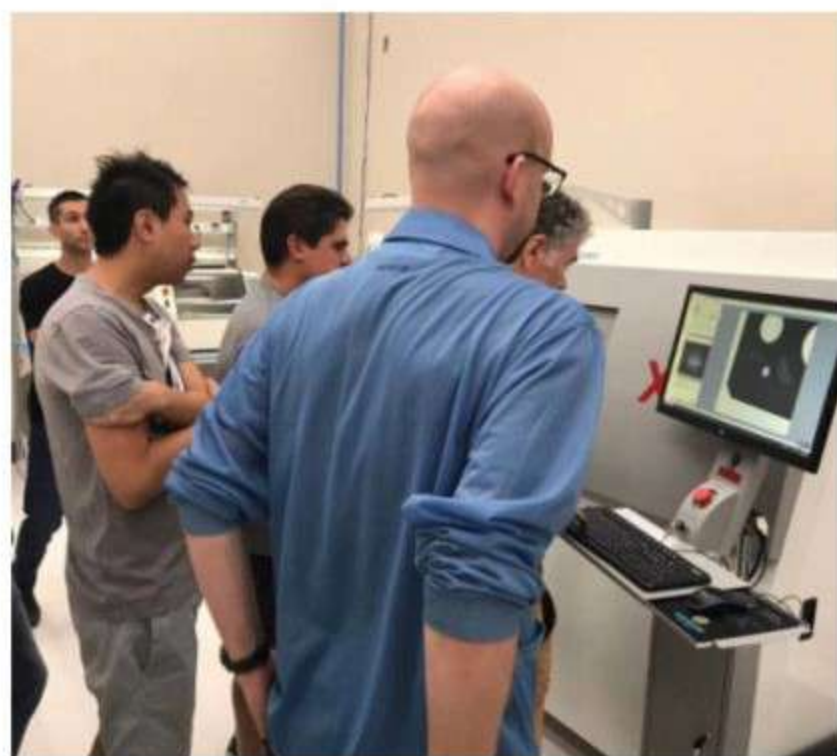
X6600

Simple Operation

Convenient operability, the mouse can be operated without the need for joystick + button
Preview guide function, intuitive point-and-click operation

Automatic positioning view function, quick creation of positioning view program

Image annotation, image noise reduction, image autofocus function



Simple BGA solder ball diameter and bubble ratio automatic measurement to generate inspection report, Windows 7 operating system, 24" display (1920 * 1080, HDMI).



Specifications

Model		X6600
X-RAY Source	Tube Type	Reflective Sealed micro-focus X-ray Source
	Voltage	90KV(130KV optional)
	Operating Voltage	40-90KV
	Operating Current	10-200μA
	Maximum Output Power	8W
	Micro Focus Size	5-15μm
Flat Panel Detector	Flat Panel Type	CMOS flat panel detector(optional)
	Pixel Matrix	1172×1100
	View Field	58mm×54mm
	Resolution	10.1Lp/mm
	Image Frame Rate(1×1)	30fps
	AD Conversion Digits	14bits
Radiation Safety	X-Ray Leakage	<1μSv/h
Equipment Performance	Stage Size	540×440mm
	Loading Capacity of Stage	≤5Kg
	Max Tilt Angle	65 degree
Equipment Specification	Dimensions	L1360×W1240×H1700mm
	Equipment Net Weight	About 1170KG
	Input Power	220V 10A/110V 15A 50-60Hz